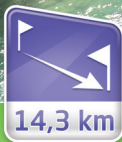




Blanc Martel trail



Difficult



14,3 km



6h30



**from mars
to november**



897 m



+890 m



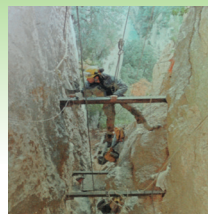
-1020 m



ACCESS : The village of La Palud-sur-Verdon is located in the heart of the Verdon Gorges, on the D952 road between Moustiers-Sainte-Marie and Castellane. You will find many parking spaces, often paid, around the village. For access to the La Maline chalet and information about shuttle services, please visit our website.

Note: Shuttle reservations are mandatory!

“Discover the stunning Verdon Gorges on the legendar **Blanc-Martel** Trail a breathtaking hike through one of France’s most spectacular natural wonders.”



Nice	118 km
Marseille	137 km
Avignon	166 km
Gap	150 km

The Rhône Apron

Belonging to the perch family (Percidae) like perch and zander this small fish rarely grows longer than 20 cm as an adult. It has a slender body, usually brownish-yellow, sometimes with a hint of grey. The Rhône Apron mainly feeds on insect larvae.

It lives in sections of rivers with pebbly or gravelly bottoms areas that are often shallow and pleasant for swimming. The Rhône Apron reproduces once a year, usually between February and April, when the water temperature is between 11 and 14°C.

This rare species can be found in the river basins of the Ardèche, the Drôme, and in some parts of the Verdon. Unfortunately, it is now considered endangered in France.

How to help protect it: avoid swimming in its natural habitat and help keep its waters clean and healthy. **Source:** aprondurhone.fr



GPX File





Blanc Martel trail - VERDON GORGES - Alpes de Haute Provence



ITINERARY : The hike begins shortly after the La Maline mountain refuge. Small steps lead you onto the trail. The descent is easy. After about 30 seconds, a small lookout point to the right offers a chance to take in the immensity of the landscape. As you gradually enter the riverside forest, ignore the riverside forest, ignore the path on the right leading to the Estellier footbridge (1). The trail runs a few meters above the Verdon, which can be glimpsed through the vegetation.

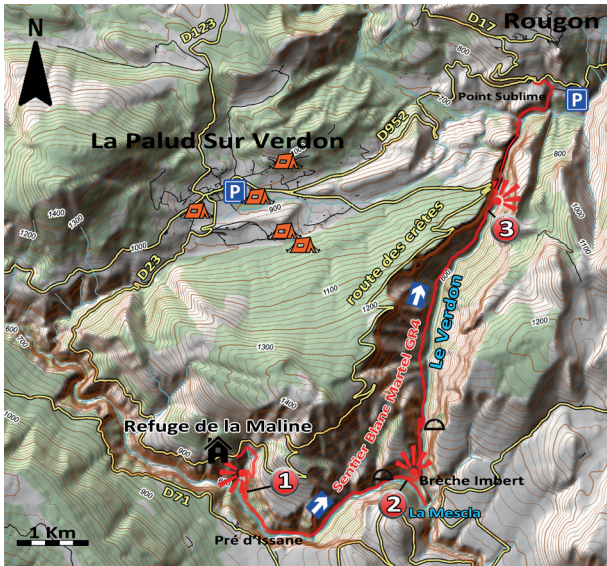
At the Pré d'Issane, you can finally reach a pebble beach and the waters of the Verdon (note: swimming is prohibited). Farther along, a well-secured passage with stairs allows you to cross the Guègues scree slopes. Shortly after la Baume aux Bœufs, take the path on the right (2) for a short out-and-back walk to la Mescla. It takes about ten minutes to reach this iconic spot where the waters of the Artuby River flow into the Verdon.

Back on the Blanc-Martel trail, begin the climb toward the top of the Brèche Imbert, which marks the halfway point of the hike. Although the ascent is steady, it is not very long. A small platform, accessible with a short climbing step, offers a safe vantage point to admire the bottom of the gorge. Then begin the descent of the Brèche via metal stairs anchored into the rock probably the most spectacular section of the entire route. Continue along wide ledges high above the Verdon.

Gradually, the path returns to the riverside forest. Near la Baume aux Chiens, you can again access a pebble beach. Then follows a long stretch above the gorges until you reach a first, unusable tunnel (3). Shortly afterward, a new lookout point, Trescaire, offers yet another magnificent view of the Verdon.

Continue through the Trescaire tunnel (110 meters) and then the Baou tunnel (610 meters). A flashlight is required to pass through them. At their exit, a small trail leads to the turnaround area of the paved road and the Samson Belvedere.

For those needing to return to the Point Sublime, continue along the GR4 trail above the road and turn left once you reach it; allow about 30 minutes for the climb. For others who left their car at the free parking area, walk back up the road for about 700 meters.



The publisher, author, or distributor cannot be held responsible in the event of an accident on this route, regardless of the cause. In case of emergency, call 112..

